

DIGIAL PREVIEW

Richard Johnston

Visual Simulations Specialist

Richard Johnston prepares visual simulations, animations, and illustrations to a variety of land developers, architects, engineers, landscape architects, as well as state and local governments. Mr. Johnston utilizes State of the art computer software to provide accurate visual simulations that account for the curvature of the earth, proposed grading activities, accuracy in proposed structural dimensions, as well as other features such as proposed landscaping and architectural treatments.

Years of Experience: +25

Education:

The Kansas City Art Institute,
Kansas City, Missouri

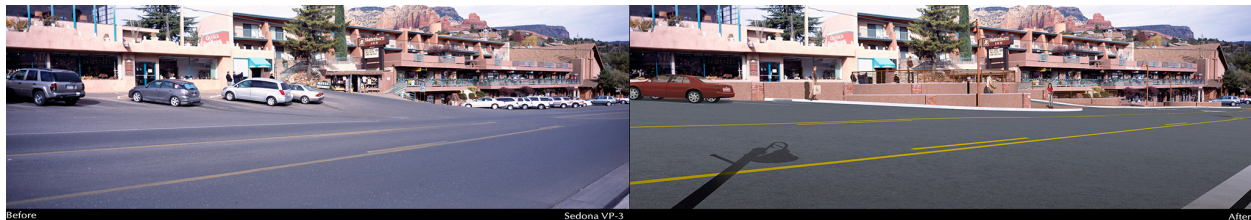
The Harry Fredman Studios,
Kansas City, Missouri

Mr. Johnston's early work history has uniquely prepared him for the work he performs today. Beginning his career as a civil engineering draftsman, architectural draftsman and surveyor he gained valuable experience that enables him to understand the technical documents related to the design and construction of all manor of landforms and structures.

RELEVANT PROJECTS:

Sedona Highway and Pedestrian Improvement Photosimulation (Sedona Arizona)

Served as Visual Simulation Specialist during the design phases and for the final simulations of proposed improvements to the tourist area of Highway 89. The proposed project scope included a roundabout as well as pedestrian traffic ways, sidewalks, retaining walls and full landscaping.



Pelican Hill Resort (Newport Beach, CA)

Served as Visual Simulation Specialist during the design stages to aid in the evaluating design scenarios of the resort architecture, view obstruction and landscaping along Pelican Hill Road. The studies included still snapshots and animated sequences of the resort and golf course. Final view simulations were completed for the EIR document as well as marketing illustrations and aerial views of the project.



The Cove (San Francisco, CA)

A proposed office complex at Oyster Point was a project wherein the client wanted to see the project in the context of a flyover video. This animation utilized “Match Move” and “Frame Stabilization” technology to superimpose the the computer modeled office complex into the video shot from a helicopter.



Minors Camp (Northern Calif)

A proposed project to clean rainwater runoff was illustrated through the use of high resolution still photographs with improvements rendered and painted as layers. The photographs were then composited into motion generating software and as an animated fly through and over.



Rio Bravo Master Planned Community, (San Bernardino Calif)

Created Visual simulations based on a master plan map utilizing composited photography



A Few more illustrations



Santa Clara Gateway Irvine CA



Santa Clara Gateway Irvine CA



San Leandro, Pleasant Hill CA



Legacy Park



Legacy Park



Legacy Park



Legacy Park

